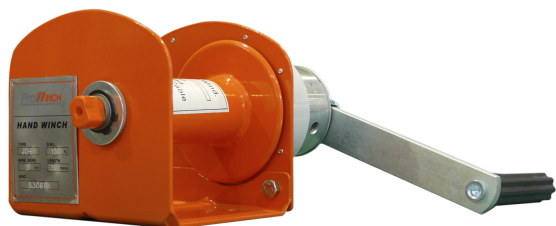


Winche manual freno automatico 100Kg Heavy Duty

Características Esenciales

- 1 Años de Garantía, Servicio y Atención al Cliente en Mexico



Especificaciones Técnicas

| | | | |
|--------------------------|-----------------|--------------------------------|-------------------|
| Capacidad 1ª Capa | 220 lb / 100 kg | Numero de Velocidades | 1 Speed |
| Clase de Servicio | Heavy-Duty | Relación de Transmisión | 1:1 |
| Freno Tambor | Automatic | Cable Recomendado | ø13/64 in ø5 mm |
| Normas | ASMEB30.7 | Garantía | 1 Year |

| Model/Modelo | PWUL100 | PWUL300 | PWUL500 | PWUL1000 | PWUL2000 | PWUL3000 |
|------------------------------------------------------------------------------|--------------------|-------------------|-------------------|-------------------|-------------------|-----------------|
| Required Effort 1st Rope Layer Esfuerzo requerido 1a capa de cable | 25.35 lb / 11.5 kg | 24.25 lb / 11 kg | 26.45 lb / 12 kg | 28.66 lb / 13 kg | 39.68 lb / 18 kg | |
| Drum Capacity Capacidad del Tambor | 98.42 ft / 30 m | | 131.23 ft / 40 m | | | |
| Drum Diameter Diámetro del tambor | 1.88 in / 48 mm | 2.38 in / 60.5 mm | 3 in / 76.3 mm | 3.50 in / 89.1 mm | 4 in / 101.6 mm | |
| Can Wind per Turn Capacidad de enrollar por giro | 6.55 in / 166.5 mm | 2.86 in / 72.8 mm | 1.90 in / 48.4 mm | 0.84 in / 21.7 mm | 0.53 in / 13.6 mm | 0.70 in / 18 mm |
| Reduction Gear Ratio Relación de engranaje de reducción | 1:1 | 2.88:1 | 4.33:1 | 12.19:1 | 22.68:1 | 22.16:1 |
| Length of Lever Handle Dimensión de la palanca | 9.44 in / 240 mm | | 13.77 in / 350 mm | | | |

